

Utility Management Consulting

MasterPlanning

PowerLV



PowerLV is a Geographic Information System developed for low voltage electrical network and associated customer data of supply authorities.

PowerLV ensures easy access, analyses, manipulation and reporting of low voltage electrical network and associated customer data.

Customer and Consumption Statistics are included by importing/linking existing Treasury data.

System Features:

The primary functions of this product are:

1. Mapping:

- Mutually agreed symbols and drawing standards are used in the development of electronic maps for the low voltage electrical network.
- Mapping of the network is based on cadastral data in either Clarke 1880 modified or WGS 84 projections. Conversion or digital data projections will be done on the different data sets (e.g. high voltage networks, water, sewage etc.) to ensure a standardized projection for the end product.

2. Data Capturing:

- Attribute data of all graphical elements are captured in a database. This may include manufacturer, status, serial number, age, type, etc.

3. Graphical Queries:

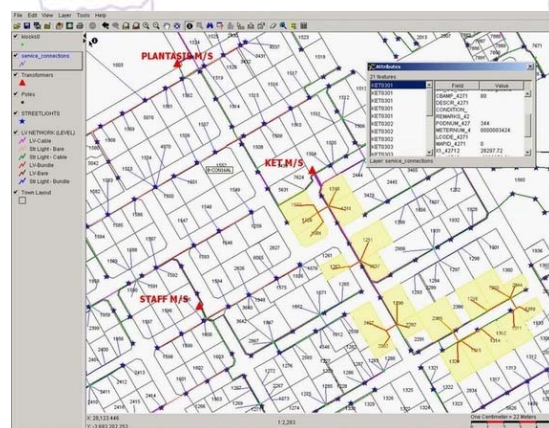
- Data in the database can be displayed visually per category in electronic drawings, e.g. colours can be used to distinguish between different types of cables or lines.

4. Tabular Queries

- Compact summaries of the data that meet the specified criteria can be produced, e.g. number of customers per tariff group.

5. Reports and Management Information

- Data can be presented effectively in printed format e.g. interruption notices to affected customers.

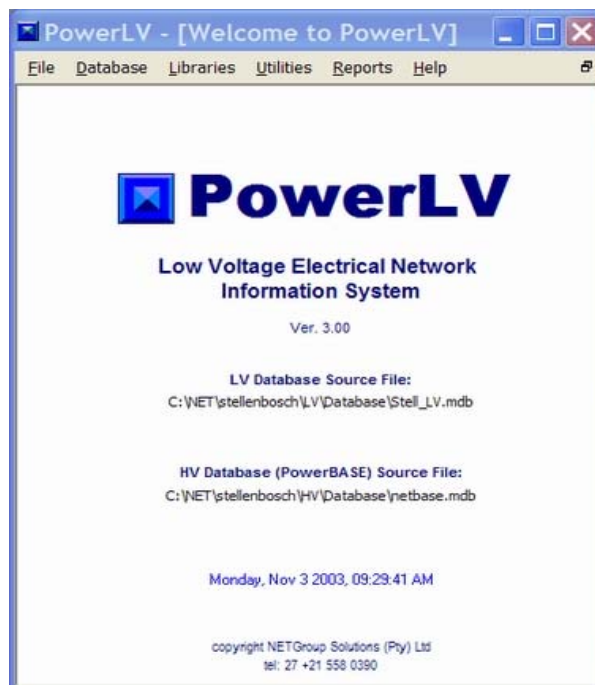




Structure:

PowerLV is a Geographic Information System consisting of the following linked parts:

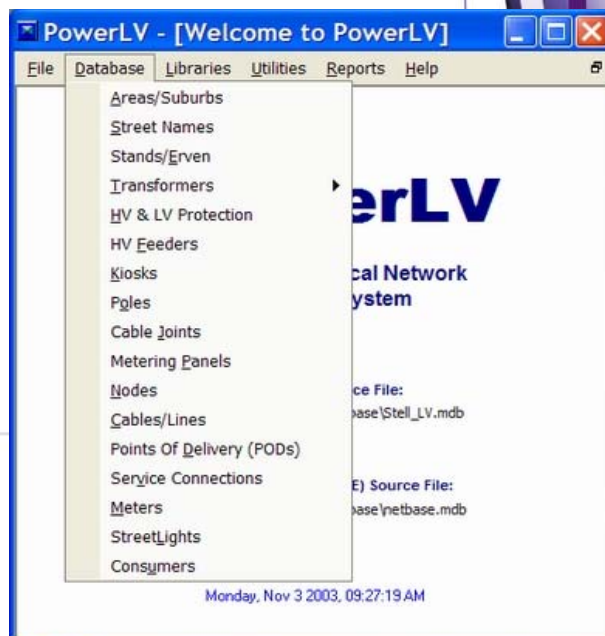
- A graphical interface (e.g. MicroStation Geographics from Bentley or ArcGIS from ESRI) containing spatial data of the low voltage electrical network and including graphical queries.
- A database interface containing tabular data of the low voltage network components (non-graphical, attribute data) for capturing and manipulation of data and including tabular queries and reporting.



The following elements are incorporated:

- Transformers
- Feeders
- Kiosks & Poles
- Cables & Lines
- Service Connections
- Streetlights

Customer and Consumption Statistics are included by importing/linking existing Treasury data.



Other Products:

- PowerBASE
- PowerREFURB
- PowerRETIC
- PowerCAPEX
- PSS/E & PSS/Adept
- TPLAN
- ReticMaster

